



**Exploring for Nevada's
Next Gold Discovery in the
Heart of the Cortez Trend**

CSE: **WG** | OTCQB: **WGLIF** | FSE: **IM50**

Discovery Strategy

Westward Gold has assembled ~70 km² of highly-prospective exploration ground across 2 properties and along 2 of the world's most productive gold trends



Focused on advancing the consolidated Toiyabe Hills Property along the prolific Cortez Trend in Nevada, USA



The fully-contiguous property is close to some of Barrick / Nevada Gold Mines' largest mines and deposits, including Cortez, Pipeline, Goldrush, and Four Mile



Westward is improving and optimizing target development through leading-edge technology and technical / strategic advisors with major discovery success



World-class location: Nevada ranks #1 in the Fraser Institute's most recent annual Investment Attractiveness Index (2022); North America's top gold-producing jurisdiction for several decades



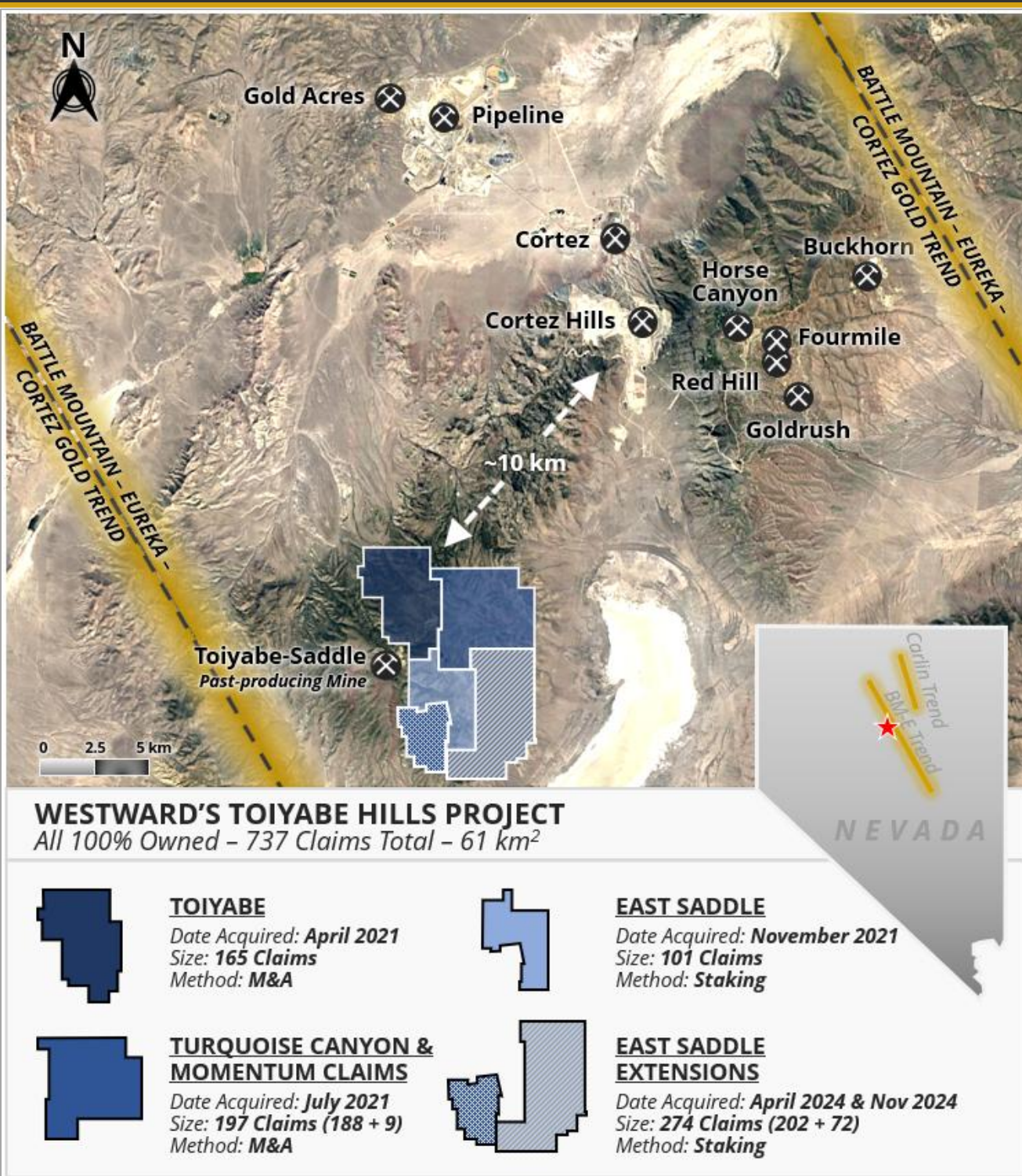
Positioned for growth through both exploration and opportunistic M&A

Leadership Team

Colin Moore *President, CEO & Director*
Andrew Nelson *Chief Financial Officer*
Robert Edie *Vice President, Exploration*
Mark Monaghan *Chairman*
David Kelley *Director*
C. Warren Beil *Director*
Al Fabbro *Director*
J. Kelly Cluer *Director*
Terry Salman *Strategic Advisor*
Matthew Lennox-King *Strategic Advisor*
Dr. John-Mark Staude *Strategic Advisor*
Steven R. Koehler *Technical Advisor*
Richard Bedell *Technical Advisor*

Shareholders

Management, Directors, Advisors	18.5%
Starcore International Mines	3.0%
Keith Neumeyer	3.2%
Minquest Ltd.	2.6%
EMX Royalty Corp.	2.3%
U.S. Global Investors	2.3%
High-Net-Worth & Retail	66.0%



Cortez Trend

A fully-contiguous ~60km² land package consolidated over the span of 3+ years, with favourable host rocks, significant drill intercepts, permits in hand, and a robust pipeline of high-priority targets

Advanced Exploration (Center / Northwest):

Historical and Westward-led drilling, active permits in place, geophysical surveys, detailed surface mapping, soil / rock-chip sampling, Carlin-type geological characteristics, and known gold mineralization

Greenfield Opportunities (East / South):

Exploration including soil / rock-chip sampling, Induced Polarization and gravity surveys, and airborne hyperspectral; prospective geology trending onto Westward-staked ground from areas with known gold mineralization

Carlin Trend

Strategic land position along the Carlin Trend, a ~90km-long gold belt that has been continuously and successfully explored and mined over the last 60 years

Prospective structural setting for Carlin-type gold mineralization, on trend with major mines; Westward plans to de-risk and advance targeting through modern surveys and detailed surface mapping

Recent significant discoveries in the area have been at depth, Westward plans to ultimately bring on a partner (through a joint venture / option vend-out) to complete drilling

Capital Structure

CSE: **WG** | OTCQB: **WGLIF** | FSE: **IM50**

Share Price (CSE)	C\$0.10
Shares Outstanding	131.1M
Market Capitalization (Basic)	C\$13.2M
Options (Avg. Strike C\$0.17)	7.4M
Warrants (Avg. Strike C\$0.19)	54.9M
Restricted Share Units	3.9M



Andrew@westwardgold.com



+1 (604) 828-7027

Disclaimer: This factsheet may contain forward-looking statements that involve risks and uncertainties. No assurance can be given that any of the events anticipated by such forward-looking statements will occur, and no reliance should be placed upon them.

