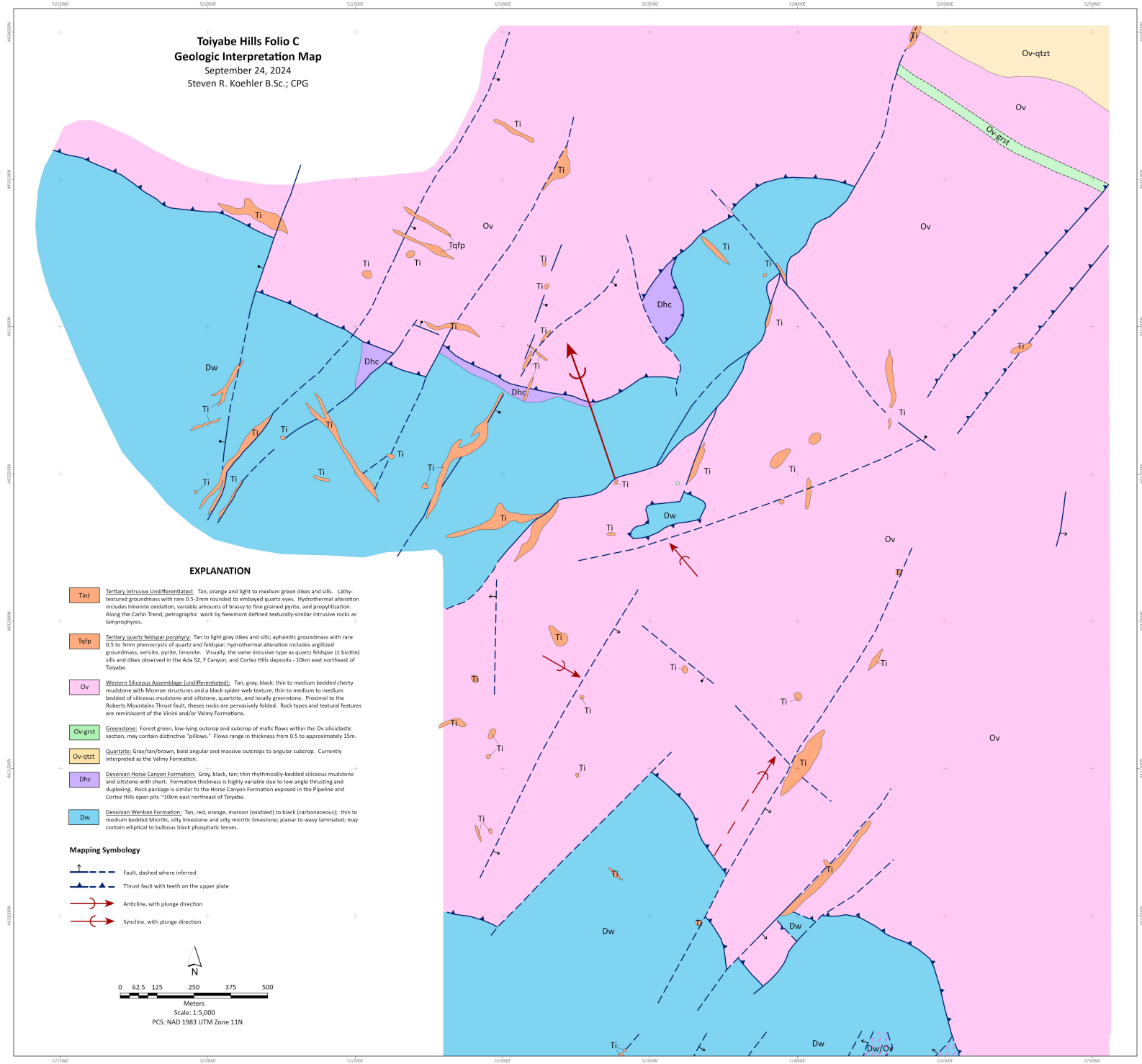


Toiyabe Hills Folio C
Geologic Interpretation Map
 September 24, 2024
 Steven R. Koehler B.Sc., CPG



EXPLANATION

- Tint** **Tertiary Intrusive (Undifferentiated)**: Tan, orange and light to medium green dikes and sills. Lath-like groundmass with rare 0.2mm rounded to embayed quartz-eyes. Hydrothermal alteration includes limonite oxidation, variable amounts of brassy to fine grained pyrite, and propylitization. Along the Carlin Trend, petrographic work by Newmont defined texturally-similar intrusive rocks as lanerosphyres.
- Tqfp** **Tertiary quartz feldspar porphyry**: Tan to light gray dikes and sills; aphanitic groundmass with rare 0.5 to 3mm phenocrysts of quartz and feldspar; hydrothermal alteration includes argillized groundmass, sericite, pyrite, limonite. Visually, the same intrusive type as quartz feldspar (± biotite) sills and dikes observed in the Ada 52, F Canyon, and Cortez Hills deposits - 10km east northeast of Toiyabe.
- Ov** **Western Siliceous Assemblage (Undifferentiated)**: Tan, gray, black; thin to medium bedded cherty mudstone with Monroe structures and a black spider web texture; thin to medium to medium bedded of siliceous mudstone and siltstone, quartzite, and locally greenstone. Proximal to the Roberts Mountains Thrust fault, these rocks are pervasively folded. Rock types and textural features are reminiscent of the Vinnai and/or Valley Formations.
- Ov-grst** **Greenstone**: Forest green, low-lying outcrop and subcrop of mafic flows within the Ov siliclastic section, may contain distinctive "pillows". Flows range in thickness from 0.5 to approximately 15m.
- Ov-qtzt** **Quartzite**: Gray/tan/brown, bold angular and massive outcrops to angular subcrop. Currently interpreted as the Valley Formation.
- Dhc** **Devonian Horse Canyon Formation**: Gray, black, tan; thin rhythmically-bedded siliceous mudstone and siltstone with chert. Formation thickness is highly variable due to low angle thrusting and duplexing. Rock package is similar to the Horse Canyon Formation exposed in the Pipeline and Cortez Hills open pits ~10km east northeast of Toiyabe.
- Dw** **Devonian Wenban Formation**: Tan, red, orange, maroon (oxidized) to black (carbonaceous); thin to medium bedded Micritic, silty limestone and silty micritic limestone; planar to wavy laminated; may contain elliptical to bulbous black phosphatic lenses.

Mapping Symbolology

- Fault, dashed where inferred
- Thrust fault with teeth on the upper plate
- Anticline, with plunge direction
- Syncline, with plunge direction

